

1g Wireless Switch	9521###
2g Wireless Switch	9522###
Wireless Scene Setter	9525###
Wireless On/Off/Stop Switch	9738

Features

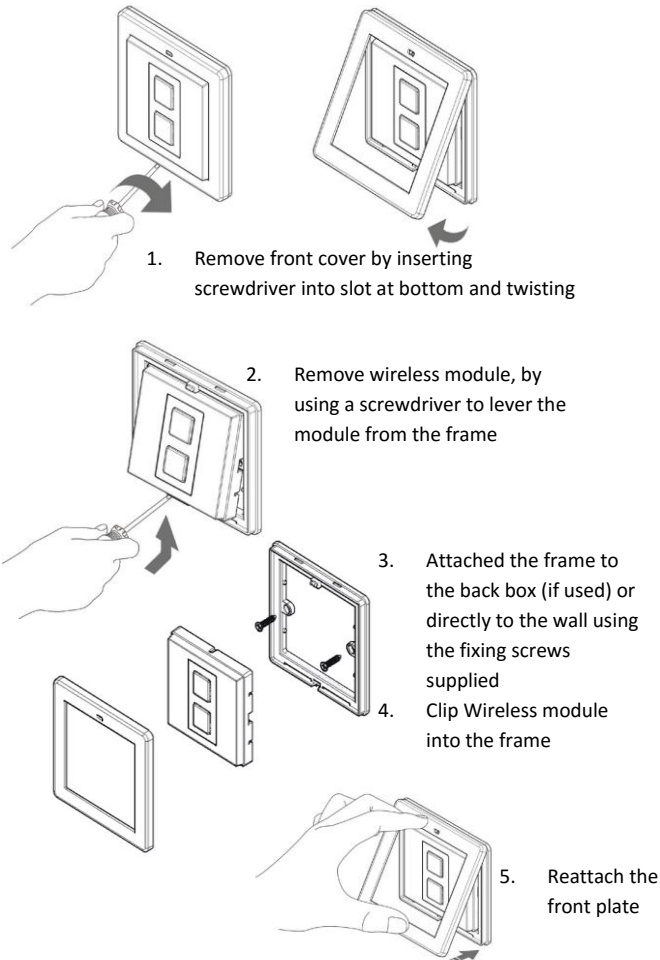
- Deta Connect Wireless Switches can be paired with Deta Connect Master Dimmers and Deta Connect Sockets to give remote switching of the device.
- Wireless Switches can also be paired with Inline Dimmers and Relays to solve difficult installations and reduce cabling.
- When Wireless Switches are paired with Master Dimmers or Inline Dimmers, they can turn the light on, off and adjust the light level.

- If the Wireless Switches are paired with socket outlets or relays, they will switch the socket or relay on remotely.
- One Wireless Switch can be paired with multiple devices
- Wireless switches are battery operated, they can be installed anywhere – there is no need for cabling or a back box.

It is important to install this product in accordance with the fitting instructions below. Failure to do so may render your guarantee void.

Installation

Wireless Switches and scene setter installation as follows:



Set-up / Linking Products

Linking a Connect device (Master Dimmer, Socket or Inline device) to a Connect Wireless Control

1. Place the Connect device that you wish to control in 'linking' mode. For information on how to do this please refer to the instruction manual for that specific Connect device.

Master Dimmer - press and hold both buttons simultaneously – the blue and amber LED's will flash alternately to signify linking mode, and then release them.



Socket Outlet - press and hold the button until the blue and amber LED's will flash alternately to signify linking mode, and then release them.

2. Press a button on the device to be "linked" and the Blue LED will flash quickly to signify that the dimmer is now linked.



The indicator light on the device you are pairing to will flash to confirm that the Wireless Control is now linked. This process can be repeated to control multiple Connect devices from one Wireless Control.

Unlinking the Switch from a Connect device

This will remove all wirelessly connected controls

1. Place the Connect device that you wish to remove in 'linking' mode. For information on how to do this please refer to the instruction manual for that specific Connect device.
2. Whilst the Connect device is in Linking Mode, tap a button on the Wireless Control. The LED light on the target device will flash to confirm that the Switch and device are unlinked.

Important things to consider

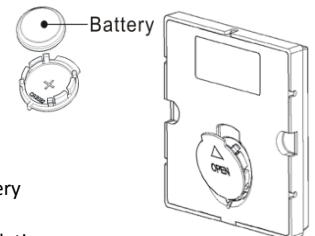
Signal Range

- Reliable range of operation is approximately 15 metres indoors and up to 100m outdoors using the Connect Link/WiFi-Link. This figure may vary depending upon the environment; very thick walls, bodies of water or large metal objects may interfere with radio range.
- If the distance between the transmitter and receiver is too great to achieve reliable operation, the Connect **Signal Booster** may be used in conjunction with this product to increase the range.

Changing the Battery

A battery will last for typically 2 years.

When the battery voltage is low the transmission level is low and is indicated by the blue LED not staying on as long as normal.



Battery Type: CR2032 3V Lithium Battery

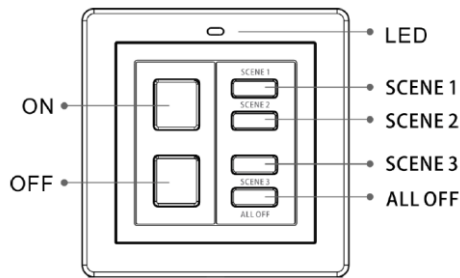
1. Remove the front plate – see Installation
2. Remove the Wireless module.
3. Remove the battery cover and replace the battery, ensuring the polarity is correct.
4. Re-assemble in reverse order.

Notes:

- Do not recharge
- Please dispose of used batteries responsibly
- Keep away from children
- Do not swallow (If swallowed, seek medical advice immediately)

1g Wireless Switch	9521###
2g Wireless Switch	9522###
Wireless Scene Setter	9525###
Wireless On/Off/Stop Switch	9738

Mood/Scene Switch



Linking

The Scene Setter can link with Master Dimmers and Socket Outlets. To link, put the device you want to link with in linking mode (see **Set-up / Linking Products** above), then press the large ON or OFF button on the scene setter. The blue LED on the device you are linking with will flash.

Setting up a Scene

1. Firstly set the desired status of each linked receiver i.e. on or off, or the desired dim level of any dimmable receivers to be included in the scene.
2. Select which scene button (1, 2, or 3) is to be used to save and recall the new scene.
3. Hold down the desired scene button for 5 seconds, the LED on the Scene Setter will flash for 3 seconds.
4. The LEDs on the receivers that are included in the new mood should flash to indicate that they are now recognised as a part of that scene.

Locking Scene Buttons

To prevent the Scenes being accidentally deleted or replaced, the Scenes can be 'locked'. To do this:

1. Press and hold the ALL OFF button
2. Whilst holding the ALL OFF button, press and hold the OFF button until the blue LED flashes, confirming the scene is locked

Unlocking Scene Buttons

1. Press and hold the ALL OFF button
2. Whilst holding the ALL OFF button, press and hold the ON button until the blue LED flashes, confirming the lock function is deactivated, and enabling a new scene to be stored.

Basic Operation

- 'ON' Button** Press once to switch linked devices 'ON'. Press and hold the button to raise the dim level of any linked dimmable receivers.
- 'OFF' Button:** Press once to switch linked devices 'OFF'. Press and hold the button to dim the level of any linked dimmable receivers.
- 'ALL OFF' Button:** Press once to switch off all linked receivers at the same time.
- 'SCENE 1, 2, 3' Buttons:** Press any one of the scene buttons to recall that particular stored scene (see 'Setting up a Scene').

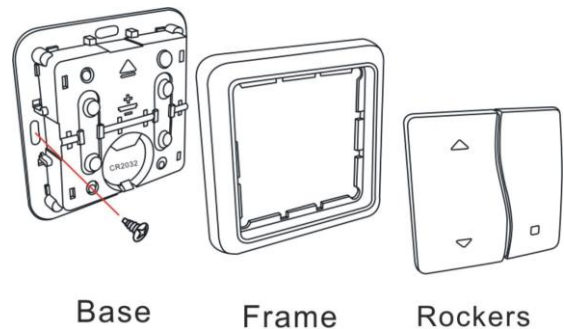
ON / OFF / STOP Switch

The On/Off/Stop Switch is designed to operate the Connect Inline Relay, catalogue number 9732.

The 'Stop' function makes it particularly useful for operating blinds, curtains and automatic doors.

The following diagram illustrates how to dis-assemble the On/Off/Stop Switch in order to screw the unit to a back-box, or to access the battery compartment. Use a flathead screwdriver to gently remove the main keys by inserting it into one of two small slots. The unit does not have to be screw mounted and may instead be attached using the adhesive strips provided.

The unit requires a CR2032 coin cell battery.



- Tap the 'on' button to switch on the linked Connect Inline Relay. This should provide the 'open' function for blinds, curtains, or doors.



- Tap the 'off' button to switch off the linked Connect Inline Relay. This should provide the 'close' function for blinds, curtains, or doors.



- Tap the 'off' button to stop the linked Connect Inline Relay, i.e. stopping the blinds, curtains, or doors in mid position.



Voltage	3V	Back Box Depth	Not required
Battery Type	CR2032 Lithium	Radio Frequency	433.92MHz